



**Construction and
Engineering Products**

The WDS Group PTY LTD

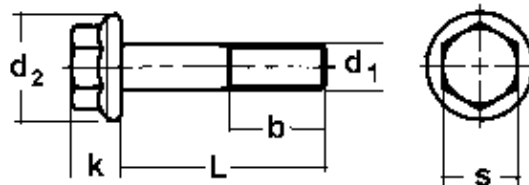
Offices in Australia, USA and New Zealand

ACN 003 832 684 ABN 90 003 832 684
1357 The Horsley Drive
PO Box 6149
WETERILL PARK NSW 2164 AUSTRALIA

Telephone 61 2 8788 8000
Fax 61 2 9725 1622
Internet www.wds.com.au
email sales@wds.com.au

Tuesday December 12th, 2006

WDS Metric 10.9 Hexagon Flange Bolts DIN 6921 Specifications



DIN 6921 (ANSI B18.2.3.4M)

d_1	d_2	k	s	$b_{L \leq 125}$	$b_{L > 125}$	$L \leq 1^1$
M 6	14.2	6.6	10	18	-	20
M 8	18	8.1	13	22	28	30
M 10	22.3	9.2	15	26	32	35
M 12	26.6	11.5	16	30	36	40
M 14	30.5	12.8	18	34	40	45
M 16	35	14.4	21	38	44	50
M 20	43	17.1	27	46	52	60

@ Copyright Al Metal

Mechanical Properties

Bolt Diameter	Property Class	Preload (N)	Tightening Torque (Nm) Plain Finish	Tightening Torque (Nm) Plated Finish	Minimum Tensile Strength (kN)	Approximate Shear* Load (kN)
M6	10.9	13700	14	12	20.9	12.54
M8	10.9	25200	34	29	38.06	22.836
M10	10.9	40100	67	58	60.32	36.192
M12	10.9	58400	117	101	87.67	52.602
M14	10.9	80100	185	114	119.6	71.76
M16	10.9	110000	285	245	163.28	97.968
M18	10.9	134000	390	340	199.68	119.808
M20	10.9	172000	550	475	254.8	152.88
M22	10.9	215000	745	640	315.12	189.072
M24	10.9	248000	950	820	367.12	220.272
M27	10.9	326000	1400	1210	477.36	286.416
M30	10.9	396000	1900	1640	583.44	350.064
M33	10.9	949000	2650	2210		
M36	10.9	579000	2360	2850	849.68	509.808
M39	10.9	696000	4290	3680	1015.14	609.084